

# DV 75 Pan Bar

Configuration/Konfiguration

0992SP

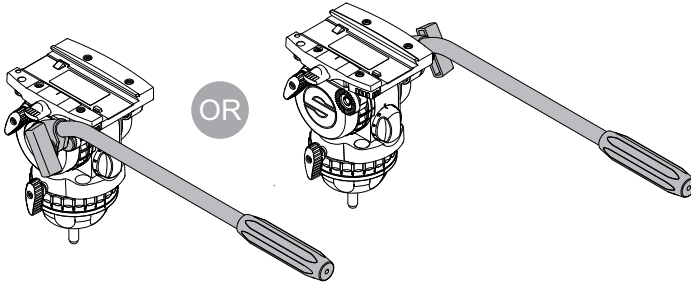


# Pan bar attachment / Schwenkarmbefestigung

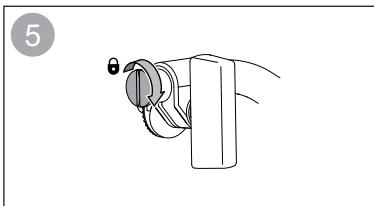
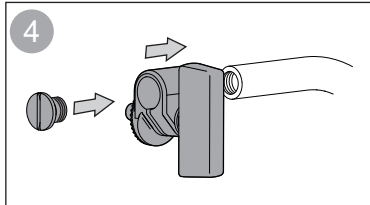
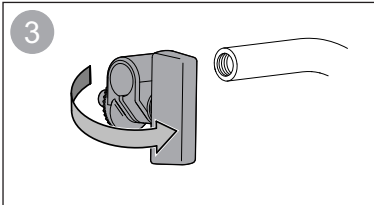
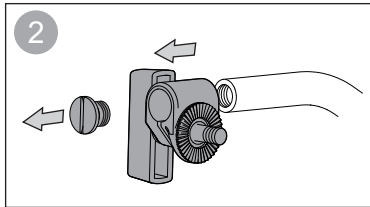
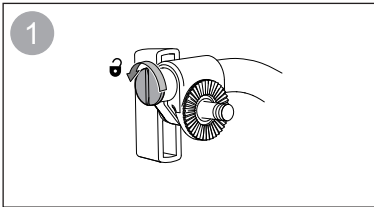
The DV 75 pan bar is supplied in right hand configuration as standard. To change the pan bar so that it can be used in the left hand configuration see **Left Hand Configuration Instructions**.

Der Schwenkarm DV 75 wird standardmäßig als DV 75 rechts zur Befestigung an der rechten Seite geliefert. Für den Umbau zur Befestigung an der linken Seite beachten Sie bitte **Umbauanleitung DV 75 Links**.

FSB

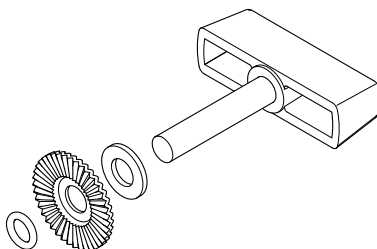


## Left Hand Configuration Instructions / Umbauanleitung DV 75 Links

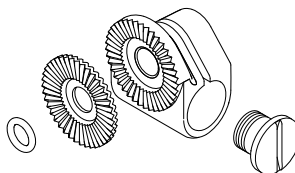


## Spares kits / Ersatzteile

S2362-1902



S2362-1903



## Safety instructions / Sicherheitshinweise



Do not attach heavy items to the pan bar.  
Bringen Sie keine schweren Gegenstände am Schwenkarm an.



Do not use the pan bar to lift or move the tripod and fluid head.  
Verwenden Sie den Schwenkarm nicht zum Anheben oder Tragen des Stativs.

## General Information / Grundlegende Hinweise



To find your local service centre visit [www.sachtler.com](http://www.sachtler.com).  
Sie finden eine Übersicht der Servicezentren unter [www.sachtler.com](http://www.sachtler.com).

©2018 The Vitec Group plc

Sachtler is a registered trademark of The Vitec Group plc or an affiliate thereof in one or more, but not all, countries.



**sachtler**



**Sachtler**  
A Vitec Group Brand

[www.sachtler.com](http://www.sachtler.com)