

# Grip Master Magnetic Car Mount (CM-GMST)

---

Instruction Manual

**PR**  **AIM**  
┌ CINEMA SERIES └

At Proaim, our goal is to ensure 100% Customer Satisfaction in all that we do.

We back our sales with a 1 year warranty from the date of purchase and work hard to resolve any problems in the unlikely event one should arise.

With our commitment to continuous improvement and your Feedback, building on our reputation of providing affordable, quality products is  
PRIORITY #1.

## ■ Table of Contents

<b>Subject</b>	<b>Page</b>
Foreword	3
Introduction	4
Safety Hints	6
Assembling	7-9
Warranty	10

## ■ Welcome To Proaim!

Dear Client,

On behalf of all the people that work so hard to provide you with the most up-to-date, flexible and cost-efficient production gear, we would like to welcome you into the Proaim family.

By purchasing your Grip Master Magnetic Car Mount, you have just joined a host of designers, engineers, machinists, assembly, customer service and office staff that take great pride in all that they do. Our mantra of continuous improvement has been the guiding principle of how we conduct our business since day one.

Once you have the opportunity to experience your new Grip Master Magnetic Car Mount, we hope you will agree that we craft quality products at competitive price. Products designed to meet and exceed the standards of today's real production world.

Standards set by our valued clients and standards we strive to maintain.

With Best Wishes,  
Proaim Team

## ■ Introduction

Proaim Grip Master, a multipurpose modular magnetic car grip, promises to deliver a wide variety of smooth, professional looking shots in conjunction with some of the most popular 3-axis gimbal stabilizers such as the DJI Ronin/M/MX and Movi models, when attached to a vehicle. The maximum payload at still position is 30kg/66lb while at running position is 15kg/33lb; which is more than enough to handle a DJI Ronin gimbal along with a camera body and a few additional accessories on top; and the vehicle driving at the maximum speed of 200km/h. What makes the Grip Master markedly unique is the versatility of parts and the degree of fine-tuning & customization possibility.

## ■ What's In The Box

Please inspect the contents of your shipped package to ensure you have received everything that is listed below.

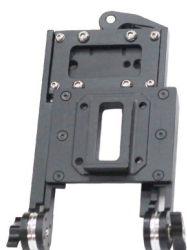
**Note: If you have purchased (CM-GMST-00) kit, you will receive the following:**



Gimbal Vibration Isolator



8 x Silicon Dust Covers



Ronin Mounting Plate



2 x Safety Straps



Flight Transport Case

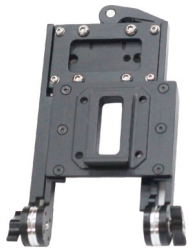
**Note: If you have purchased (CM-GMST-01) kit, you will receive the following:**



Gimbal Vibration Isolator



4 x Silicon Dust Covers



Ronin Mounting Plate



2 x Safety Straps



Flight Transport Case



## Safety Hints

**ATTENTION: PLEASE READ THIS BEFORE USING TO PREVENT SERIOUS DAMAGE TO THE GEAR!**

### **BE CAUTIOUS OF CLEANLINESS & ADHESION**

Always make sure that the suction cups and mounting surface must be clean. If they are left unconsidered, the suction cups won't install correctly and it may cause accidental loss.

### **BE HIGHLY VIGILANT WHILE OPERATING**

The horizontal and vertical areas around the vehicle must be kept free. Use only on secured roads/areas. Be very careful while using on public roads.

### **NEVER LEAVE THE FIXTURES LOOSE**

All the knobs/screws must be locked tightly to avoid unbalancing of the whole camera setup.

### **IT IS RECOMMENDED TO ENSURE ADDITIONAL SUPPORT**

Always utilize safety/tension straps as a backup, to guarantee further protection. The steadiness and holding force must also be tested before shooting.

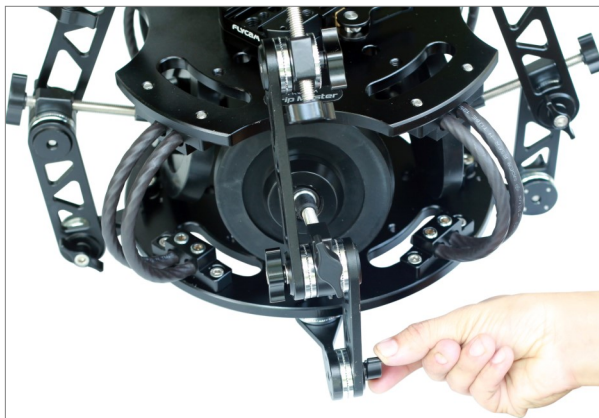
FOLLOWING THESE GUIDELINES WILL PROVIDE BETTER SHOTS AND TROUBLE-FREE OPERATION.

SHOULD YOU NEED ADDITIONAL INFORMATION, TECHNICAL ASSISTANCE IS AVAILABLE 'ONLINE' BY CONTACTING YOUR SALES REPRESENTATIVE.



## ■ Assembling

- Loosen the first knob that helps in unfolding the gripper. Pull out the first arm with magnetic suction cup. Now loosen the second knob and pull out the second arm with suction cup.



- To guarantee proper adhesion of suction cups, check that the surfaces of both - suction cup and mounting surface are clean, dry & dust-free. Please mount the device on smooth, even, non-porous and magnetic surfaces.

- Place Grip Master Vibration Isolator on the selected position where you want to shoot.



- You can easily adjust/level the angle of each arm through the provided knob, which gives extra flexibility, and thus you can mount the cups to virtually any part of vehicle.



- According to the surface on which you are shooting, you can adjust the height of suction cup by turning the knob.



- Although Grip Master's holding force is adequate for regular driving shots, safety belts/tension straps must be used for additional security. When mounted on cars, the objects attached to the Grip Master (e.g. camera, gimbal, etc.) have to be secured additionally.



- Use the rubber sleeves to avoid dents and scratches on car paint. Tighten tension straps carefully to avoid damages.





- Mount Ronin Wedge Plate on the Grip Master Car Mount.

**NOTE:** You can adjust the angle from 0° to 90° and can flawlessly shoot both angled and vertical moves, by using the provided knob.



- Finally, mount the DJI / Movi Gimbals (Not Included) of your choice as shown.



**NOTE:** Test all fixtures before driving.

## **YOUR PROAIM GRIP MASTER VIBRATION ISOLATOR MAGNETIC CAR MOUNT ALL DRESSED-UP AND READY TO GO!**



**(SHOWN WITH OPTIONAL ACCESSORIES)**

### **WARRANTY**

We offer a one year warranty for our products from the date of purchase.

We will repair or replace your product, free of charge, in the event of a defect in materials or craftsmanship obtained during normal use or handling based on the user manual. Please note that we will not cover any shipping costs for returning the product to us. If any VAT or import duties are applied to the return, we will also charge these costs to the customer.

The warranty does not include, by the way of example, damage caused by products that we do not supply or from mishandling in transit, accident, misuse, neglect, lack of care of the product , or service by anyone other than our company.

We are not liable for incidental or consequential damages resulting from the use of the unit or occurring due to any breach of this warranty.

Replacement parts of the product will be provided at nominal cost (covering the cost price of the replacement parts only) to the customers after the Warranty Period has expired. We will cover the complete cost of sending replacement parts within the warranty period. After that, Nominal cost of the product & Actual shipping cost will be charged.

Do not send the unit to us without first getting a response and getting the approval to send back the item.

In case of any kind of dissatisfaction, we urge you to Contact us immediately and we shall do our Best to help you out. For any other assistance you can reach us via email.

For any other assistance you can reach us via email.